



Symptomy výstavby jaderného zdroje (...alespoň toho v Mochovcích)

Listopad 2023

Disclaimer

IMPORTANT: You must read the following before continuing. The following applies to the confidential information following this page (the “Confidential Information”), and you are therefore advised to read this carefully before reading, accessing or making any other use of the Confidential Information. In accessing the Confidential Information, you agree to be bound by the following terms and conditions, including any modifications to them any time you receive any information from us as a result of such access.

This Confidential Information is provided to you for information purposes only and should not be relied upon by the Recipients and no liability, responsibility, or warranty of any kind is expressed, assumed or implied by EPH for the accuracy, inaccuracy, interpretation, misinterpretation, application, misapplication, use or misuse of any statement, claim, purported fact or financial amount, prediction or expectation and does not constitute an offer to sell shares or other securities or the solicitation of an offer to buy shares or other securities, nor shall there be any offer or sale of shares or other securities in any jurisdiction in which such offer or sale would be unlawful prior to registration or qualification under the securities laws of such jurisdiction.

This Confidential Information is not for publication, release or distribution. You are reminded that this Confidential Information has been delivered to you on the basis that you are a person into whose possession this Confidential Information may be lawfully delivered in accordance with the laws of the jurisdiction in which you are located and you may not, nor are you authorized to, deliver or disclose the contents of this Confidential Information to any other person.

In addition, we also draw each Recipient’s attention to the fact that this presentation contains “forward-looking statements” regarding EPH and its subsidiaries and its future business. Such statements are not historical facts and may include opinions and expectations about management’s confidence and strategies as well as details of management’s expectations of new and existing programs, technology and market conditions. Although EPH believe their opinions and expectations are based on reasonable assumptions, these forward-looking statements are subject to numerous risks and uncertainties, not all of which will be exhaustively explored in this presentation or elsewhere. Accordingly, the Recipients should not regard such statements as representations as to whether such anticipated events will occur nor that expected objectives will be achieved. The Recipients are reminded that all forward-looking statements in this presentation are made as of the date hereof and for the avoidance of doubt EPH does not undertake to update any such statement made to reflect events or circumstances after the date hereof or to reflect the occurrence of unanticipated events. For the avoidance of doubt, EPH does not accept any liability in respect of any such forward-looking statements.

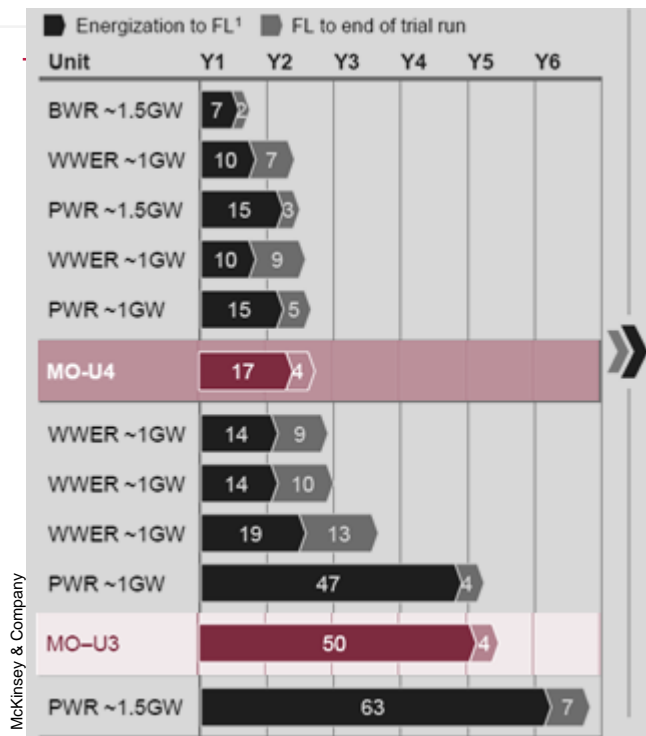
1

DOBA REALIZACE
PROJEKTU



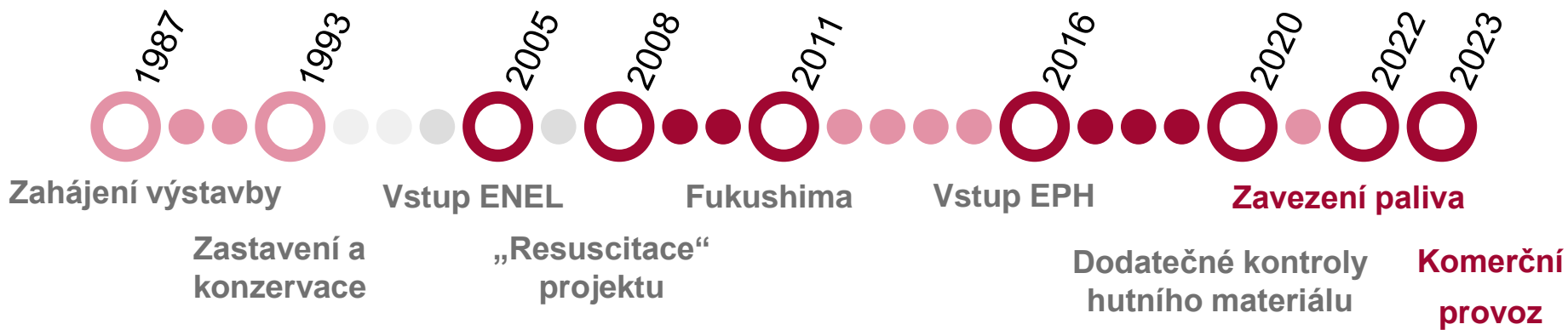
DOBA REALIZACE PROJEKTU JADERNÉHO BLOKU JE DLOUHÁ

...projekt v Mochovcích (bohužel není výjimkou)



Kontext:

- 9 vlád SR od roku 2008
- Od roku 2015 narostl Index cen stavebních prací o 57,9%



DOBA REALIZACE PROJEKTU JADERNÉHO BLOKU JE DLOUHÁ

...projekt v Mochovcích (bohužel není výjimkou)



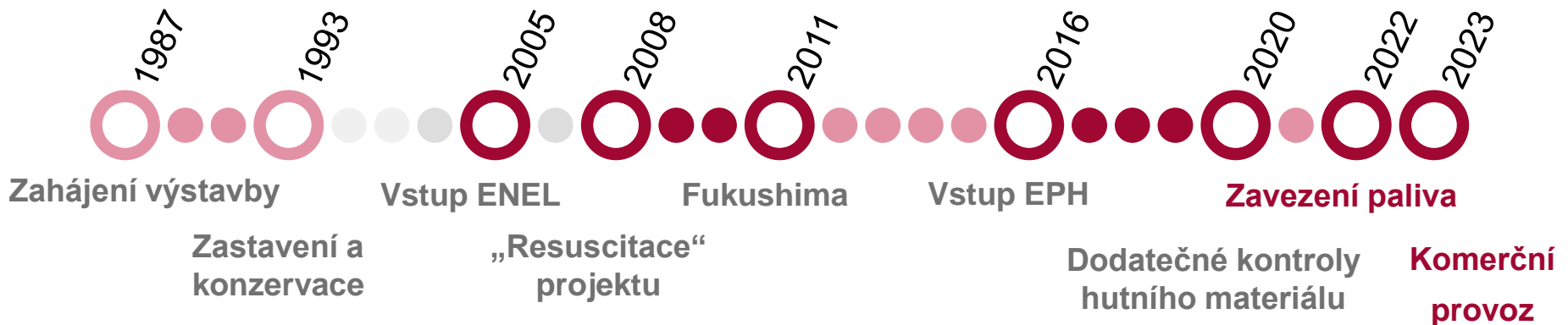
Řízení nákladů spojených s rostoucí dobou realizace

Vypořádávání nároků dodavatelů na související zvýšené náklady

Funkčnost eskalačních ujednání v čase (*třeba i za 15 let*)

Náklady na tým (souvisí i s dodavatelským modelem)

Více než **1800** dodatků smluv



DOBA REALIZACE PROJEKTU JADERNÉHO BLOKU JE DLOUHÁ

...projekt v Mochovcích (bohužel není výjimkou)

**...takto vypadá s přibývajícím časem
pohled investora a pohled dodavatele**

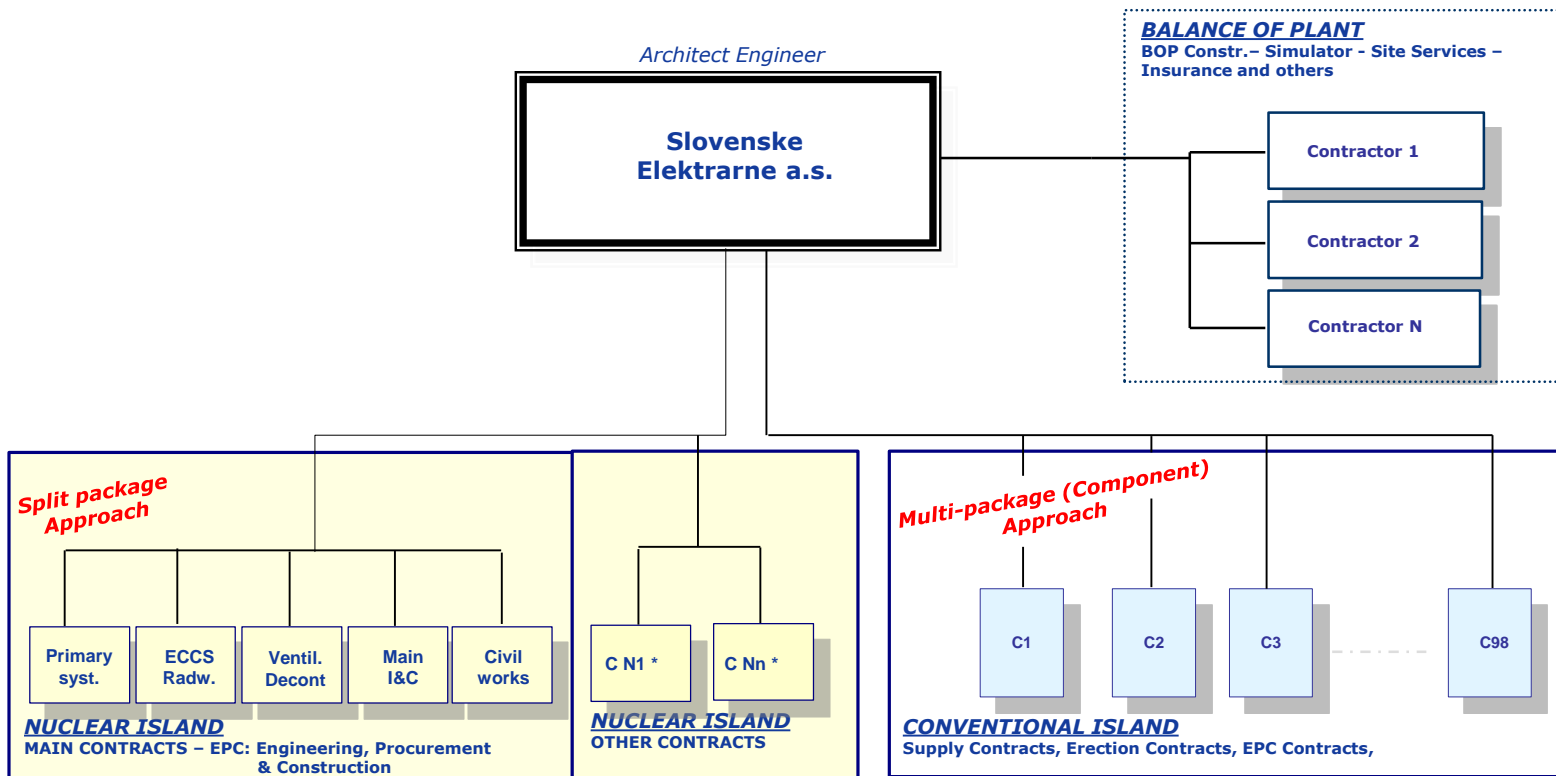


DODAVATELSKÝ MODEL

2



Mochovce Units 3&4 Completion Project General contractual scheme



*Includes mainly: special I&C, supply and erection of field instrumentation and electrical systems



DODAVATELSKÝ MODEL = „DNA“ projektu

...s dodavatelským modelem odžijete celý projekt

...determinuje organizační strukturu a nastavení rozhodovacích procesů



Nastavení odpovídající organizace

Počet dodavatelů od začátku projektu - **582** suppliers

Počet smluv a dodatků – více než **3200**

	CE	WE	EE	O
Contracts and amendments	2508	668	37	31
Share from total amount	72,9%	23,9%	2,1%	1,2%

CE = Central Europe = SK, CZ, HU, PL, HR

WE = West Europe = all European countries to the west from Slovakia (except CZ)

EE = East Europe = RU, RO, BG

O = Others = US, CA

INVESTOR A DODAVATELÉ

...všichni visíme na jednom lanu

...problém dodavatele je hlavně problém váš

...a (doufejme)
směřujeme
k jednomu cíli



shastaguides.com

3

„VELIKOST
JEDNOTLIVOSTÍ“



„VELIKOST JEDNOTLIVOSTÍ“

...mohou mít fatální dopad nejen na projekt



Např. ojedinělé porušení systému managementu kvality

Sice představuje krátkodobý benefit pro jeden subjekt celého řetězce

V konečném důsledku znamená však neřiditelné dopady do harmonogramu i rozpočtu projektu

Dopad nejen na projekt samotný, ale na celé odvětví



pouze ilustrace

4

KONEC DOBRÝ, VŠECHNO DOBRÉ

JE TO OHROMNÝ ÚSPĚCH

...mnoho lidí v byznysu nám nevěřilo

- financování
- technologie
- komplexnost projektu

NYNÍ NÁS ČEKÁ JEŠTĚ 4. BLOK



Thank you
**...for your
attention!!!**



Contact

Energetický a průmyslový holding, a.s.

Pařížská 26

110 00 Praha 1

Czech Republic

Tel.: +420 232 005 100

Mail: info@epholding.cz

Web: www.epholding.cz

